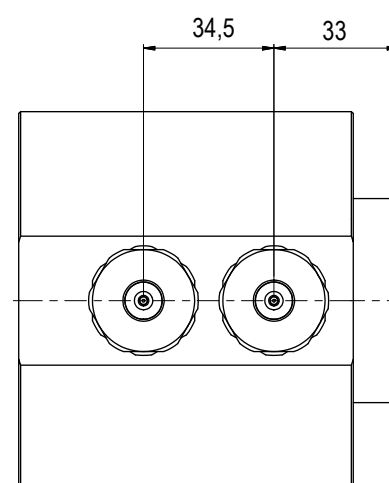
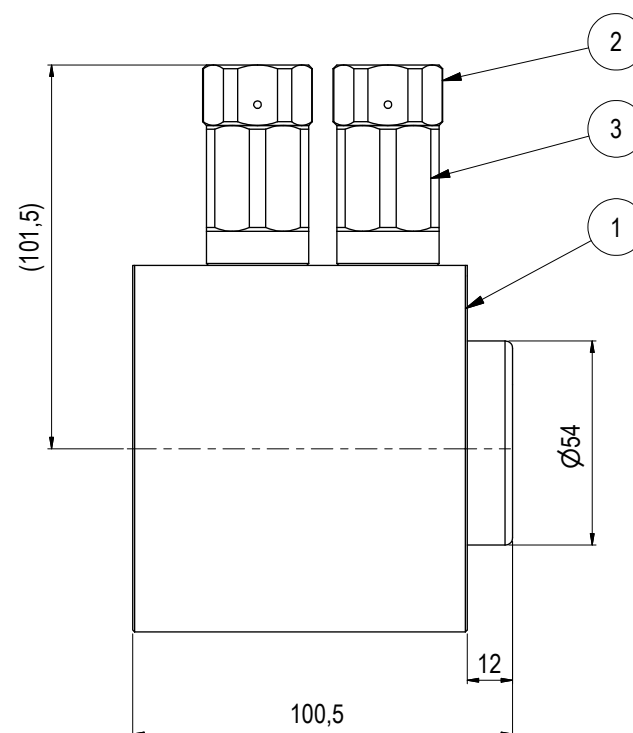
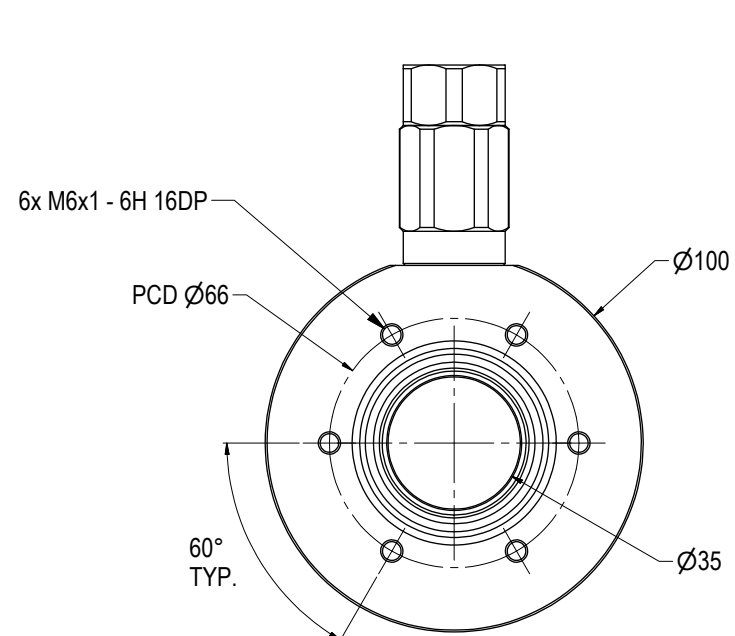


Parts List			
ITEM	QTY	PART No.	TITLE
1	1	PA0429	Ø35 DP Rec 20k Interv BSP 3/8"
2	2	PA0354	Adapter -Autoclave
3	2	PA0219	2-Way Check Valve 20k Interv BSP 3/8" 120 Cone



NOTE: 1  
DESIGN CODE:  
API 17H/6A

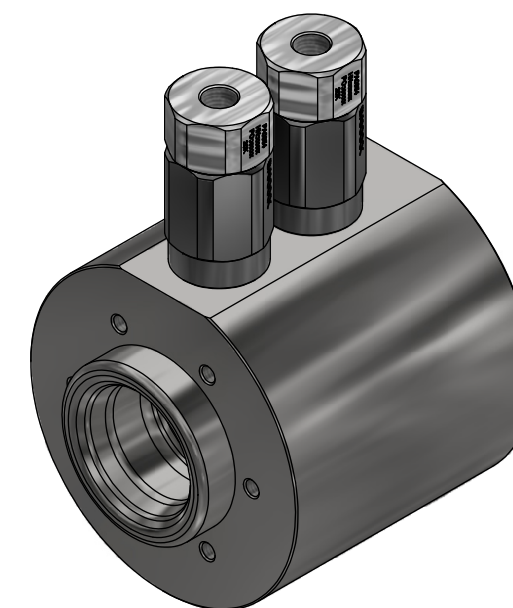
NOTE: 2  
TECHNICAL CLASSIFICATION:  
Article Type: 001-Hot Stabs  
Main Group: 1.01. Ø35 Hot Stab  
Intermediate Group: 1.1.02. Receptacle  
Sub Group: 1.1.2.02. Dual

NOTE: 3  
INTERFACE INFORMATION:  
Pressure Rating Bar: 1380  
Design Water Depth: N/A  
Material: Intervention  
Weight: 5,3 kg  
Volume: 0,67 dm<sup>3</sup>  
Submerged Weight: 4,57 kg  
Surface Area: 877 cm<sup>2</sup>  
Hydraulic: 1/4" MP  
Mechanical: 6xM6@PCD 66  
Electrical: N/A  
Com. & Protocol: N/A

NOTE: 4  
SPAREPARTS:  
BA5287

NOTE: 5  
ADDITIONAL INFORMATION:  
The Ø35mm Blue Logic Hot Stab is made according to API 17H. This Hot Stab is in general designed for flow up to approx 25 liters pr. munute. We have pressure rating up to PSI 20K or 1380 Bar. The Hot Stab system can also be fitted with an lock-system.

Other hydraulic port interface can be delivered on customers request.



Rev.	Date	Reason for issue	Revision change
05	5.3.2026	9-IFU (Issued for Use)	
04	10.6.2015	9-IFU (Issued for Use)	
03	13.4.2015	9-IFU (Issued for Use)	
02	3.6.2014	9-IFU (Issued for Use)	

WTJ	HNJ	WTJ
WTJ	HNJ	WTJ
WTJ	HNJ	WTJ
WTJ	HNJ	WTJ
Made	Chk'd	Appr.

**BLUE LOGIC**

This Drawing is the Property of Blue Logic AS © and must Not be Loaned, Reproduced or Transferred to others without written Permission

Dwg Scale:	NTS
Dwg Proj:	
Dwg Format:	A3

Drawing title:	Ø35 DP Rec 20k Interv wCV MP 1/4"
Drawing number:	BA2012
Rev:	05